

The Economic Impact of Hurricane Katrina on its Victims:
Evidence from Individual Tax Returns

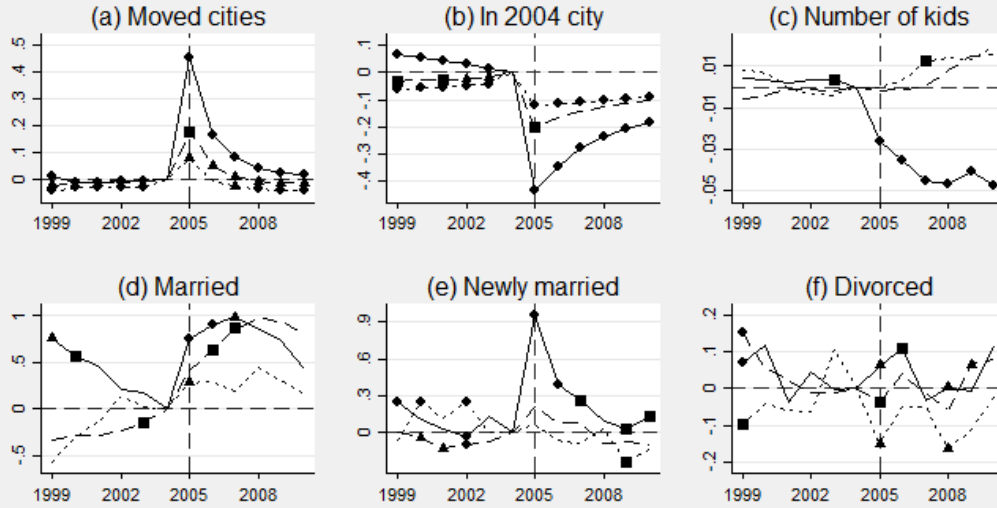
Tatyana Deryugina, Laura Kawano, and Steven Levitt

ONLINE APPENDIX

September 2014

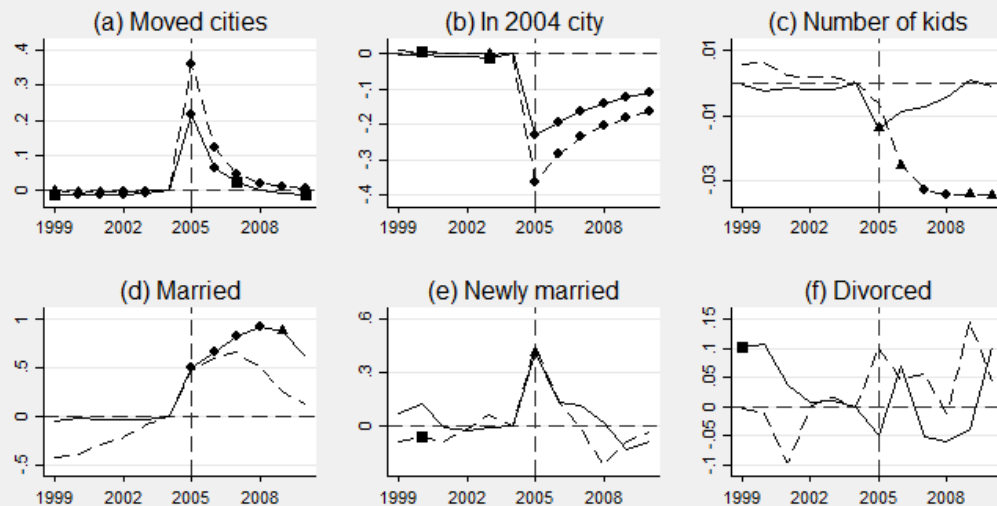
Figures

Figure A1. Heterogeneity in household outcomes by damages



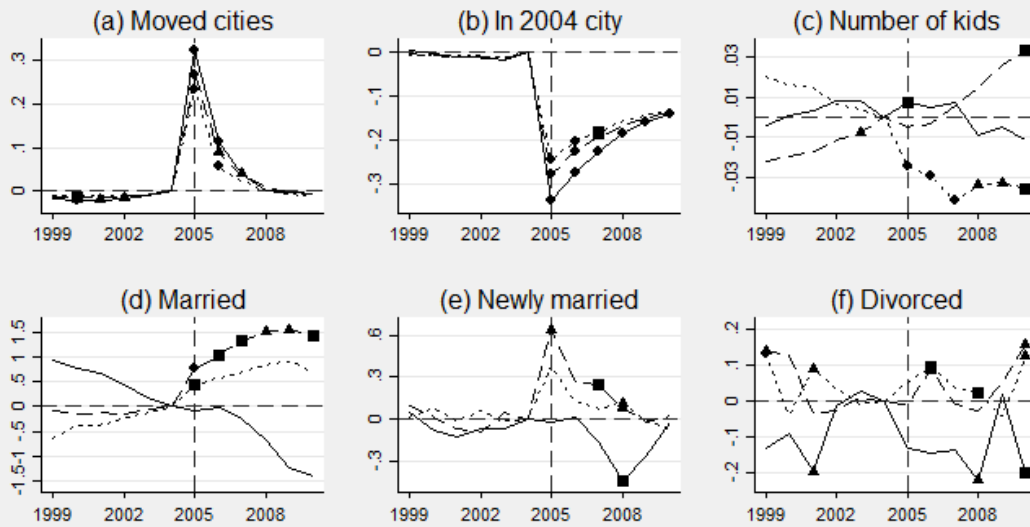
Solid lines represent the estimated effect on look-and-leave (LAL) zip codes. Long dashes represent the estimated effect on look-and-stay (LAS) zip codes. Short dashes represent the estimated effect on other New Orleans zip codes. Circle/square/triangle = significantly different at 1/5/10% levels from (a) other NO residents (LAL and LAS lines) or (b) from 0 (other NO zip codes line). The estimates for married, newly married, and divorced are scaled by 100.

Figure A2. Heterogeneity in household outcomes by income



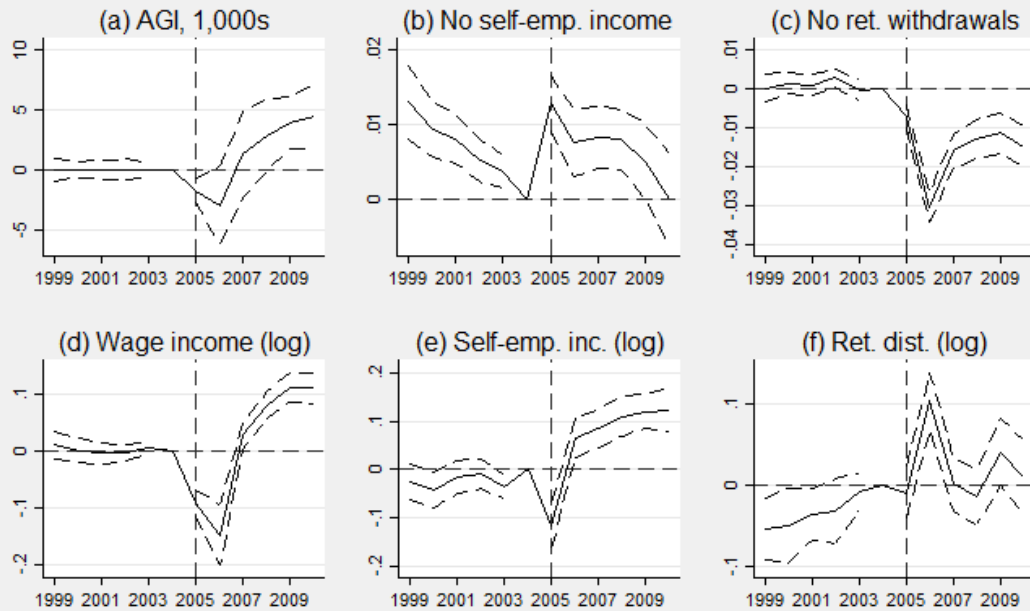
Solid lines denote estimated effect on those with above median AGI in 1999-2004, while dashed lines represent estimated effect on those with below median AGI in 1999-2004. Circle/square/triangle = significantly different at 1/5/10% levels from (a) those above the median (below median line) or (b) from 0 (above median line). The estimates for married, newly married, and divorced are scaled by 100.

Figure A3. Heterogeneity in household outcomes by age



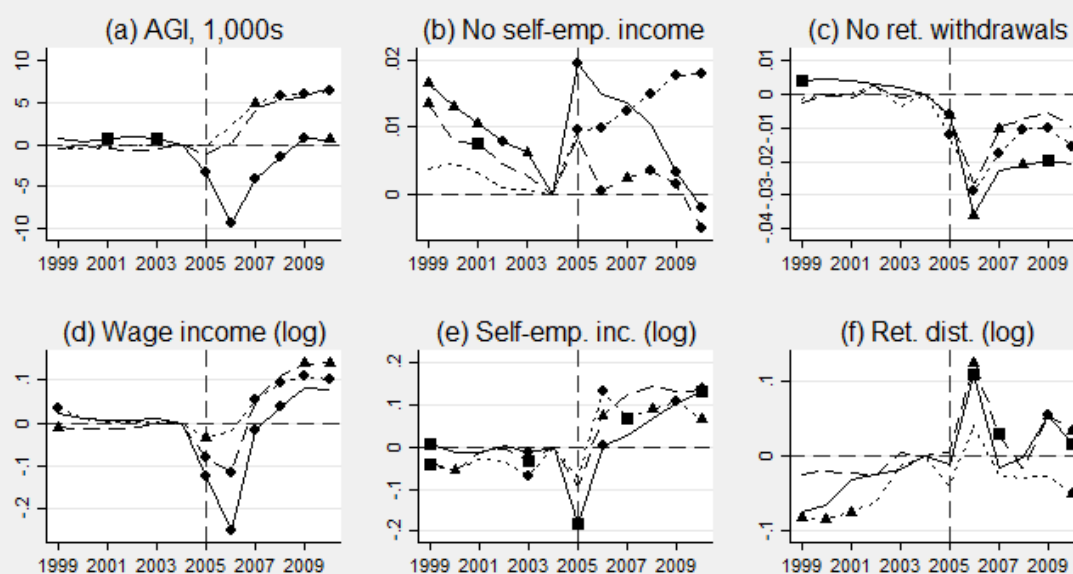
Solid lines denote estimated effect on the 30 and under age group, long dashes represent the estimated effect on 31-54 age group, while short dashes represent the estimated effect on people aged 55 and over. Circle/square/triangle = significantly different at 1/5/10% levels from (a) 30 and under (31-54 and 55+ lines) or (b) from 0 (30 and under line). The estimates for married, newly married, and divorced are scaled by 100.

Figure A4. Other effects of Hurricane Katrina, whole sample



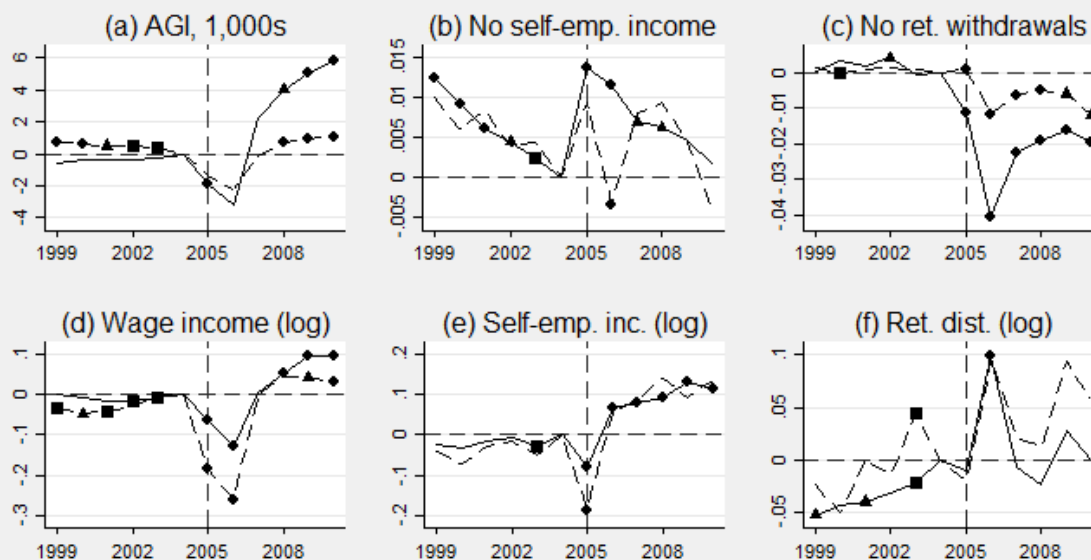
Dashed lines correspond to 95% confidence intervals.

Figure A5. Other effects of Hurricane Katrina, by LAL/LAS/other status



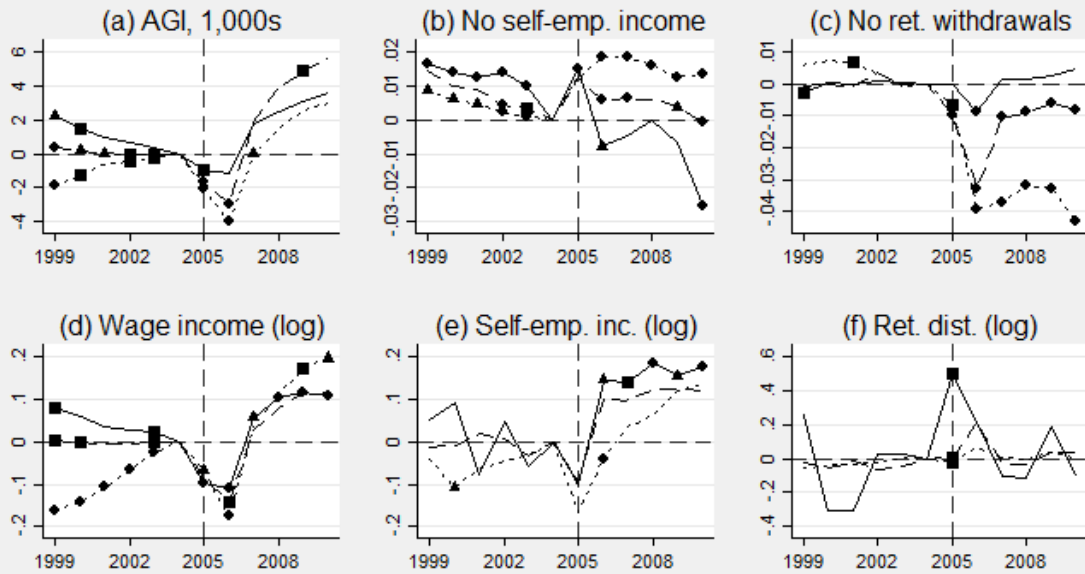
Solid lines represent the estimated effect on look-and-leave (LAL) zip codes. Long dashes represent the estimated effect on look-and-stay (LAS) zip codes. Short dashes represent the estimated effect on other New Orleans zip codes. Circle/square/triangle = significantly different at 1/5/10% levels from (a) other NO residents (LAL and LAS lines) or (b) from 0 (other NO zip codes line).

Figure A6. Other effects of Hurricane Katrina, by income



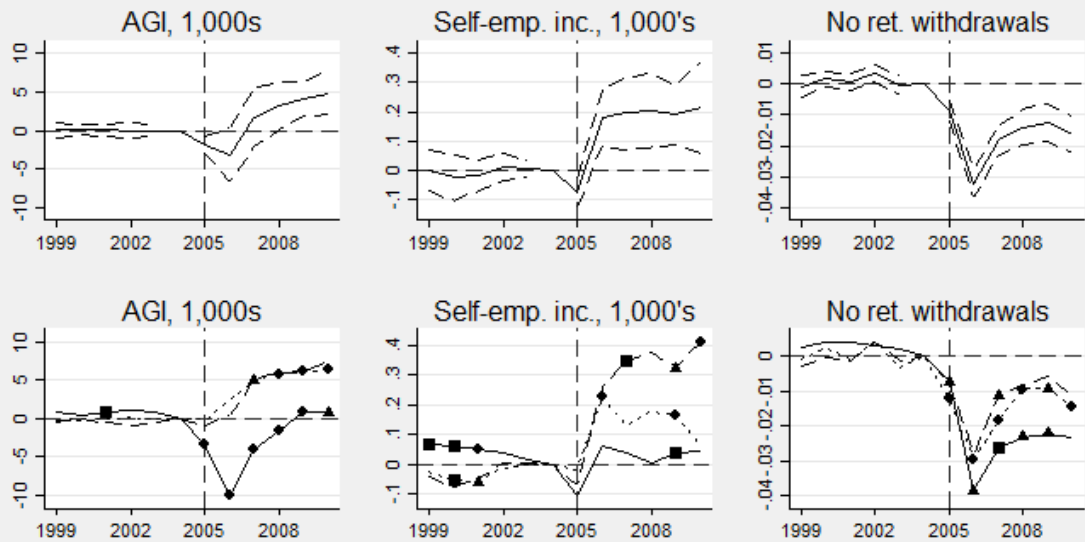
Solid lines denote estimated effect on those with above median AGI in 1999-2004, while dashed lines represent estimated effect on those with below median AGI in 1999-2004. Circle/square/triangle = significantly different at 1/5/10% levels from (a) those above the median (below median line) or (b) from 0 (above median line). The estimates for married, newly married, and divorced are scaled by 100.

Figure A7. Other effects of hurricane Katrina, by age



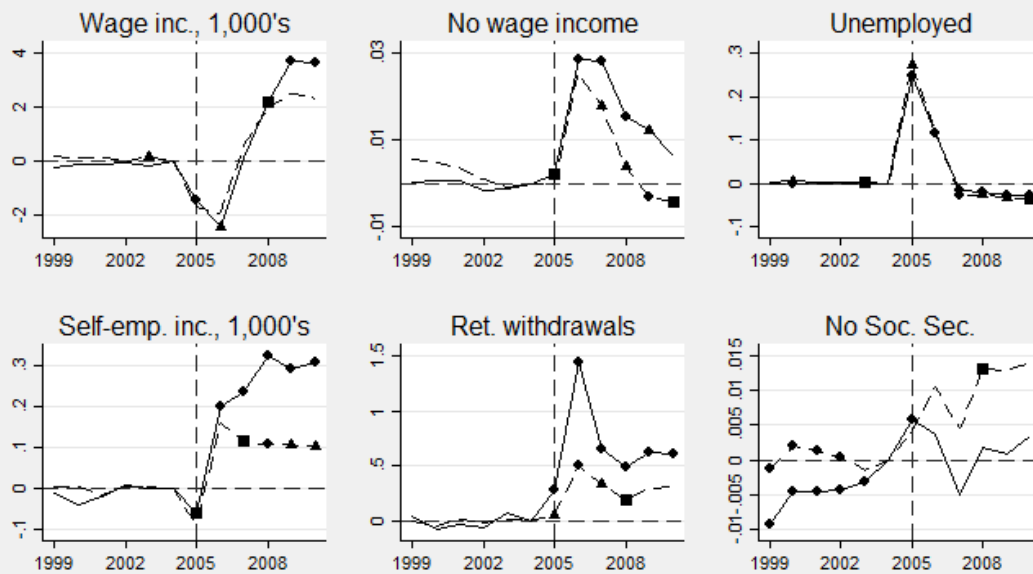
Solid lines denote estimated effect on the 30 and under age group, long dashes represent the estimated effect on 31-54 age group, while short dashes represent the estimated effect on people aged 55 and over. Circle/square/triangle = significantly different at 1/5/10% levels from (a) 30 and under (31-54 and 55+ lines) or (b) from 0 (30 and under line).

Figure A8. Effects of Hurricane Katrina in balanced sample



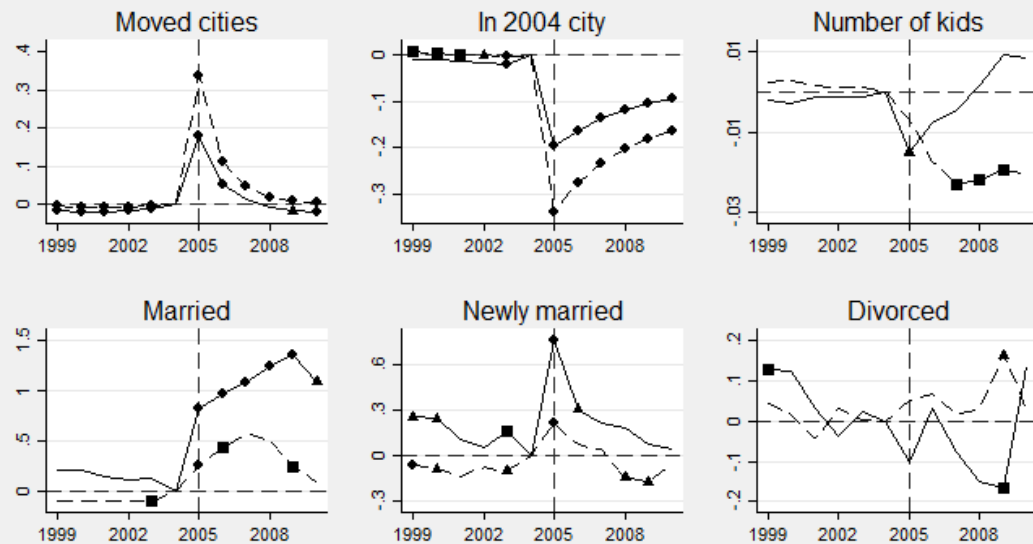
Top panel shows estimates for the whole sample. Bottom panel shows estimated effect by LAL/LAS status, with the solid line representing LAL/LAS zip codes. Dashed lines for overall sample correspond to 95% confidence intervals. Solid lines in the LAL graphs represent the estimated effect on look-and-leave (LAL) zip codes. Long dashes represent the estimated effect on look-and-stay (LAS) zip codes. Short dashes represent the estimated effect on other New Orleans zip codes. Circle/square/triangle = significantly different at 1/5/10% levels from (a) other NO residents (LAL and LAS lines) or (b) from 0 (other NO zip codes line).

Figure A9. Heterogeneity in economic outcomes by home ownership



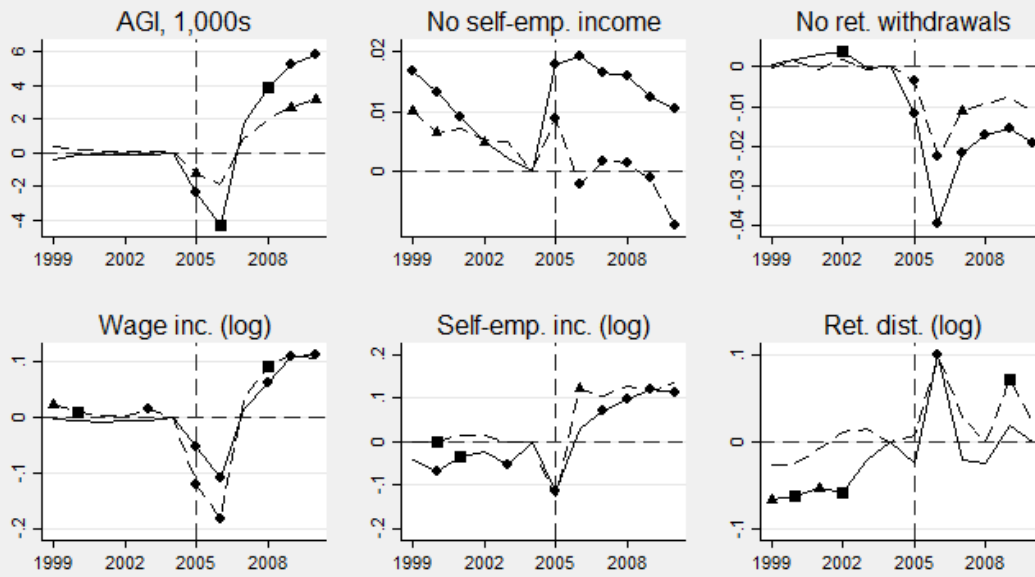
Solid lines denote estimated effect on those who owned a home in 2004, while dashed lines represent estimated effect on those who did not. Circle/square/triangle = significantly different at 1/5/10% levels from (a) those who owned homes (non-owners line) or (b) from 0 (owners line).

Figure A10. Heterogeneity in household outcomes by home ownership



Solid lines denote estimated effect on those who owned a home in 2004, while dashed lines represent estimated effect on those who did not. Circle/square/triangle = significantly different at 1/5/10% levels from (a) those who owned homes (non-owners line) or (b) from 0 (owners line). The estimates for married, newly married, and divorced are scaled by 100.

Figure A11. Other effects of Hurricane Katrina, by home ownership



Solid lines denote estimated effect on those who owned a home in 2004, while dashed lines represent estimated effect on those who did not. Circle/square/triangle = significantly different at 1/5/10% levels from (a) those who owned homes (non-owners line) or (b) from 0 (owners line).

Tables

Table A1: Effect of hurricane Katrina on economic outcomes, full sample

	Wage income	No wage income	Unemployed	Self- employment income	Retirement account withdrawals	No Social Security income
1999	-18 (377)	0.003** (0.001)	0.000 (0.002)	-2 (30)	9 (65)	-0.005** (0.002)
2000	-11 (319)	0.003** (0.001)	0.001 (0.002)	-14 (33)	-64 (49)	-0.001 (0.001)
2001	-13 (237)	0.002* (0.001)	0.000 (0.002)	-18 (25)	-8 (42)	-0.001 (0.001)
2002	-25 (182)	0.000 (0.001)	0.001 (0.002)	7 (20)	-41 (40)	-0.002 (0.001)
2003	-20 (127)	-0.001 (0.001)	0.001 (0.001)	1 (12)	34 (39)	-0.002*** (0.001)
2005	-1610*** (309)	0.001 (0.001)	0.262*** (0.016)	-76*** (21)	149** (65)	0.005*** (0.001)
2006	-2195*** (779)	0.027*** (0.004)	0.114*** (0.012)	180*** (42)	940*** (117)	0.007*** (0.003)
2007	391 (744)	0.023*** (0.004)	-0.021*** (0.001)	172*** (55)	480*** (140)	0.000 (0.003)
2008	2069** (823)	0.009*** (0.003)	-0.023*** (0.001)	208*** (61)	328** (137)	0.008*** (0.003)
2009	3085*** (826)	0.004 (0.003)	-0.031*** (0.002)	195*** (49)	446*** (132)	0.007** (0.003)
2010	2947*** (925)	0.001 (0.003)	-0.032*** (0.002)	200** (82)	442** (195)	0.009*** (0.004)
Dep. var. mean	35,539	0.145	0.068	1,026	2,625	0.863
Observations	3,233,784	3,233,784	3,233,784	3,233,784	3,233,784	3,233,784
R-squared	0.000	0.033	0.066	0.000	0.000	0.070
F-test of pre-trends (p-value)	1.000	0.001	0.987	0.000	0.000	0.001

Robust standard errors (clustered by 2004 zip code) in parentheses. Significance levels: * 10 percent, ** 5 percent, *** 1 percent. Omitted category is year 2004.

Table A2: Effect of hurricane Katrina on household outcomes, full sample

	Moved cities	In 2004 city	Number of kids	Married	Newly married	Divorced
1999	-0.010 (0.007)	0.001 (0.018)	0.000 (0.005)	0.040 (0.351)	0.082 (0.072)	0.080 (0.050)
2000	-0.014*** (0.003)	-0.002 (0.016)	0.000 (0.004)	0.038 (0.276)	0.063 (0.070)	0.063 (0.055)
2001	-0.013*** (0.003)	-0.005 (0.013)	0.000 (0.004)	0.021 (0.212)	-0.028 (0.065)	-0.013 (0.056)
2002	-0.011*** (0.003)	-0.006 (0.011)	0.000 (0.003)	0.000 (0.128)	-0.018 (0.066)	0.001 (0.062)
2003	-0.007** (0.003)	-0.010 (0.007)	0.000 (0.002)	0.002 (0.076)	0.017 (0.066)	0.012 (0.047)
2005	0.265*** (0.044)	-0.276*** (0.038)	-0.011*** (0.004)	0.512*** (0.094)	0.460*** (0.148)	-0.018 (0.052)
2006	0.083*** (0.020)	-0.224*** (0.029)	-0.013** (0.006)	0.680*** (0.126)	0.173* (0.089)	0.051 (0.051)
2007	0.032*** (0.012)	-0.189*** (0.022)	-0.015 (0.009)	0.797*** (0.186)	0.117 (0.094)	-0.026 (0.048)
2008	0.008 (0.009)	-0.163*** (0.018)	-0.011 (0.010)	0.842*** (0.215)	-0.001 (0.074)	-0.055 (0.053)
2009	-0.003 (0.008)	-0.145*** (0.016)	-0.006 (0.011)	0.754*** (0.249)	-0.061 (0.067)	0.009 (0.047)
2010	-0.006 (0.007)	-0.131*** (0.014)	-0.007 (0.013)	0.549* (0.293)	-0.014 (0.081)	0.078 (0.066)
Dep. var. mean	0.07	0.85	0.66	0.30	0.01	0.01
Observations	3,233,784	3,232,000	3,233,784	3,233,784	3,233,784	3,233,784
R-squared	0.069	0.128	0.005	0.008	0.002	0.001
F-test of pre-trends (p-value)	0.000	0.000	1.000	1.000	0.441	0.456

Robust standard errors (clustered by 2004 zip code) in parentheses. Significance levels: * 10 percent, ** 5 percent, *** 1 percent. Omitted category is year 2004. The estimates for "married", "newly married", and "divorced" are scaled by 100.

Table A3: Effects of hurricane Katrina by LAL/LAS status

	Wage income			No wage income indicator			Unemployed		
	LAL	LAS	Other	LAL	LAS	Other	LAL	LAS	Other
1999	629 (473)	-373 (507)	-501 (488)	0.004** (0.002)	0.005*** (0.002)	-0.002 (0.002)	-0.002 (0.003)	0.000 (0.002)	0.004 (0.003)
2000	573 (396)	-291 (397)	-560 (458)	0.003** (0.001)	0.004*** (0.001)	-0.001 (0.002)	-0.001 (0.002)	0.000 (0.002)	0.006** (0.003)
2001	364 (319)	-209 (300)	-325 (319)	0.003** (0.001)	0.004*** (0.001)	-0.003* (0.002)	-0.001 (0.002)	0.000 (0.002)	0.004 (0.003)
2002	303 (219)	-189 (247)	-317 (240)	-0.001 (0.001)	0.001 (0.001)	-0.003* (0.002)	-0.002 (0.002)	0.001 (0.002)	0.006** (0.003)
2003	220 (157)	-118 (168)	-290* (174)	-0.001 (0.001)	-0.001 (0.001)	-0.002 (0.001)	0.001 (0.002)	-0.001 (0.002)	0.004** (0.002)
2005	-2601*** (345)	-1255*** (280)	-384 (376)	0.003*** (0.001)	0.000 (0.001)	-0.002 (0.001)	0.318*** (0.018)	0.243*** (0.014)	0.190*** (0.015)
2006	-5079*** (691)	-1117* (602)	1106 (843)	0.043*** (0.004)	0.019*** (0.003)	0.012*** (0.004)	0.158*** (0.012)	0.101*** (0.008)	0.057*** (0.012)
2007	-2092*** (732)	1664** (759)	2398** (989)	0.037*** (0.004)	0.015*** (0.003)	0.009** (0.005)	-0.023*** (0.003)	-0.020*** (0.002)	-0.022*** (0.002)
2008	-569 (882)	3516*** (896)	3932*** (908)	0.019*** (0.002)	0.003 (0.002)	0.004* (0.002)	-0.025*** (0.002)	-0.021*** (0.002)	-0.026*** (0.002)
2009	561 (951)	4539*** (933)	4678*** (911)	0.015*** (0.003)	-0.003 (0.002)	-0.003 (0.003)	-0.031*** (0.002)	-0.029*** (0.002)	-0.038*** (0.002)
2010	115 (1042)	4675*** (1035)	4505*** (1093)	0.014*** (0.003)	-0.007*** (0.002)	-0.007** (0.003)	-0.029*** (0.002)	-0.030*** (0.002)	-0.042*** (0.004)
Dep. var. mean	35,538	35,538	35,538	0.145	0.145	0.145	0.068	0.068	0.068
Observations	3,233,723	3,233,723	3,233,723	3,233,723	3,233,723	3,233,723	3,233,723	3,233,723	3,233,723
R-squared	0.000	0.000	0.000	0.033	0.033	0.033	0.069	0.069	0.069
F-test of pre-trends (p-value)	0.000	1.000	1.000	0.001	0.000	0.050	0.511	0.513	0.100

Robust standard errors (clustered by 2004 zip code) in parentheses. Significance levels: * 10 percent, ** 5 percent, *** 1 percent. Omitted category is year 2004. Estimates for different groups are from the same regression and are split up for readability.

Table A4: Effects of hurricane Katrina by LAL/LAS status

	Self-employment income			Retirement account withdrawals			No Social Security income		
	LAL	LAS	Other	LAL	LAS	Other	LAL	LAS	Other
1999	58** (25)	-43 (49)	-26 (29)	-163* (99)	161** (74)	-20 (48)	-0.005*** (0.002)	-0.006** (0.003)	0.000 (0.005)
2000	66 (40)	-68 (48)	-44 (27)	-164** (83)	47 (47)	-143*** (45)	-0.002 (0.001)	-0.002 (0.002)	0.003 (0.003)
2001	41* (24)	-55 (36)	-53** (25)	-91 (64)	79 (50)	-61 (63)	-0.001 (0.001)	-0.002 (0.001)	0.001 (0.003)
2002	43 (26)	-12 (26)	-20 (19)	-64 (46)	8 (58)	-121 (97)	-0.002* (0.001)	-0.003** (0.001)	0.001 (0.002)
2003	18 (19)	-2 (13)	-28* (16)	-58 (42)	82* (43)	107 (106)	-0.002*** (0.001)	-0.003*** (0.001)	0.001 (0.002)
2005	-102*** (26)	-63** (27)	-53 (54)	105 (72)	141 (86)	272 (176)	0.009*** (0.001)	0.004*** (0.001)	-0.001 (0.001)
2006	86 (53)	249*** (56)	194*** (67)	1063*** (195)	839*** (183)	947*** (84)	0.010*** (0.003)	0.010*** (0.002)	-0.006 (0.004)
2007	39 (65)	294*** (67)	133 (89)	566** (251)	310* (175)	748*** (166)	-0.002 (0.003)	0.004 (0.003)	-0.006* (0.004)
2008	30 (59)	362*** (66)	185* (102)	462** (235)	183 (174)	424* (224)	0.009*** (0.003)	0.013*** (0.002)	-0.007** (0.003)
2009	66 (55)	311*** (56)	162*** (44)	676** (267)	249* (145)	475*** (106)	0.008** (0.003)	0.013*** (0.003)	-0.010*** (0.003)
2010	41 (121)	388*** (94)	41 (54)	528 (354)	284 (265)	674*** (173)	0.010*** (0.003)	0.015*** (0.003)	-0.009*** (0.003)
Dep. var. mean	1,026	1,026	1,026	2,625	2,625	2,625	0.863	0.863	0.863
Observations	3,233,723	3,233,723	3,233,723	3,233,723	3,233,723	3,233,723	3,233,723	3,233,723	3,233,723
R-squared	0.000	0.000	0.000	0.000	0.000	0.000	0.071	0.071	0.071
F-test of pre-trends (p-value)	0.000	0.000	0.000	0.000	0.000	0.000	0.000	0.000	0.016

Robust standard errors (clustered by 2004 zip code) in parentheses. Significance levels: * 10 percent, ** 5 percent, *** 1 percent. Omitted category is year 2004. Estimates for different groups are from the same regression and are split up for readability.

Table A5: Effects of hurricane Katrina on economic outcomes by income

	Wage income		No wage income indicator		Unemployed		Self-emp. income		Ret. withdrawals		No Soc.Sec. income	
	Below	Above	Below	Above	Below	Above	Below	Above	Below	Above	Below	Above
1999	-615** (299)	-644 (399)	0.009** (0.004)	0.004*** (0.001)	0.001 (0.003)	0.002 (0.002)	39 (42)	-28 (51)	-43 (42)	-42 (82)	0.005 (0.003)	-0.005** (0.002)
2000	-452* (241)	-572* (318)	0.009*** (0.003)	0.004*** (0.001)	0.000 (0.003)	0.004** (0.001)	39 (37)	-47 (55)	-29 (31)	-145** (65)	0.012*** (0.004)	-0.003* (0.002)
2001	-315 (201)	-509** (248)	0.006** (0.003)	0.003*** (0.001)	0.003 (0.003)	0.001 (0.002)	20 (36)	-44 (38)	5 (33)	-77 (53)	0.008*** (0.003)	-0.003 (0.002)
2002	-258* (145)	-412** (201)	0.002 (0.002)	0.001 (0.001)	-0.002 (0.003)	0.003** (0.002)	37 (27)	-15 (32)	3 (35)	-111** (50)	0.007*** (0.002)	-0.003*** (0.001)
2003	-66 (84)	-298** (138)	0.000 (0.002)	0.000 (0.001)	-0.004 (0.003)	0.003** (0.001)	16 (27)	-11 (18)	30 (32)	-1 (56)	0.003* (0.002)	-0.003*** (0.001)
2005	-1632*** (195)	-1757*** (428)	-0.001 (0.002)	0.003*** (0.001)	0.307*** (0.012)	0.241*** (0.018)	-145*** (27)	-45** (23)	-14 (45)	263*** (72)	0.008*** (0.002)	0.005*** (0.001)
2006	-1769*** (452)	-2642** (1037)	0.028*** (0.004)	0.028*** (0.005)	0.133*** (0.009)	0.108*** (0.014)	171*** (45)	182*** (48)	181*** (61)	1369*** (122)	0.036*** (0.009)	0.000 (0.001)
2007	218 (398)	290 (997)	0.018*** (0.004)	0.025*** (0.004)	-0.027*** (0.002)	-0.016*** (0.002)	97** (49)	207*** (67)	92 (56)	784*** (137)	0.031*** (0.009)	-0.006*** (0.002)
2008	1055** (445)	2307** (1076)	0.000 (0.003)	0.016*** (0.003)	-0.022*** (0.003)	-0.022*** (0.002)	129** (51)	241*** (72)	56 (63)	582*** (136)	0.043*** (0.011)	-0.002 (0.002)
2009	1501*** (552)	3447*** (1057)	-0.011*** (0.003)	0.013*** (0.004)	-0.027*** (0.003)	-0.031*** (0.002)	107** (51)	223*** (55)	140** (63)	716*** (151)	0.040*** (0.011)	-0.002 (0.002)
2010	1130* (626)	3355*** (1185)	-0.008** (0.004)	0.007* (0.004)	-0.030*** (0.003)	-0.032*** (0.003)	122 (78)	225** (94)	256*** (75)	731*** (190)	0.040*** (0.011)	0.000 (0.003)
Dep. var. mean	35,539	35,539	0.145	0.145	0.068	0.068	1,026	1,026	2,625	2,625	0.863	0.863
Observations	3,233,784	3,233,784	3,233,784	3,233,784	3,233,784	3,233,784	3,233,784	3,233,784	3,233,784	3,233,784	3,233,784	3,233,784
R-squared	0.000	0.000	0.035	0.035	0.067	0.067	0.000	0.000	0.000	0.000	0.076	0.076
F-test of pre-trends (p-value)	0.000	0.000	0.024	0.001	0.022	0.058	0.000	1.000	0.000	0.000	0.000	0.033

Robust standard errors (clustered by 2004 zip code) in parentheses. Significance levels: * 10 percent, ** 5 percent, *** 1 percent. Omitted category is year 2004. Estimates for different groups are from the same regression and are split up for readability. "Below" and "above" refer to household's 1999-2004 AGI relative to the median 1994-2004 AGI in New Orleans.

Table A6: Effects of hurricane Katrina by age

	Wage income			No wage income indicator			Unemployed		
	55+	31-54	30-	55+	31-54	30-	55+	31-54	30-
1999	-2010*** (321)	380 (617)	2037** (974)	0.017*** (0.003)	-0.005*** (0.001)	0.000 (0.003)	-0.002 (0.002)	0.002 (0.002)	-0.004 (0.005)
2000	-1357*** (253)	186 (490)	1422 (894)	0.013*** (0.003)	-0.003** (0.001)	0.002 (0.002)	0.002 (0.002)	0.001 (0.002)	-0.004 (0.004)
2001	-875*** (211)	26 (322)	1113 (729)	0.011*** (0.003)	-0.003** (0.001)	0.000 (0.002)	-0.001 (0.002)	0.001 (0.002)	-0.002 (0.004)
2002	-596*** (141)	-2 (230)	734 (566)	0.004* (0.002)	-0.003*** (0.001)	-0.002 (0.002)	0.000 (0.002)	0.002 (0.002)	-0.007 (0.004)
2003	-311*** (109)	-38 (151)	479 (350)	0.002 (0.002)	-0.003*** (0.001)	-0.003** (0.001)	0.001 (0.002)	0.002 (0.002)	-0.005 (0.003)
2005	-1257*** (247)	-1772*** (368)	-1632*** (427)	0.002 (0.002)	0.000 (0.001)	0.003 (0.002)	0.201*** (0.015)	0.293*** (0.016)	0.258*** (0.014)
2006	-1988*** (650)	-2445*** (900)	-1575 (990)	0.045*** (0.010)	0.022*** (0.003)	0.013*** (0.003)	0.106*** (0.012)	0.127*** (0.013)	0.082*** (0.010)
2007	-494 (547)	725 (907)	1165 (1201)	0.051*** (0.013)	0.014*** (0.002)	0.004 (0.003)	-0.010*** (0.002)	-0.025*** (0.002)	-0.028*** (0.004)
2008	806 (558)	2659** (1037)	2214 (1561)	0.025*** (0.008)	0.005*** (0.002)	0.001 (0.002)	-0.012*** (0.002)	-0.028*** (0.002)	-0.025*** (0.003)
2009	1551*** (547)	3960*** (1035)	2933 (1860)	0.023** (0.009)	0.000 (0.002)	-0.006* (0.003)	-0.015*** (0.002)	-0.039*** (0.002)	-0.034*** (0.004)
2010	1490*** (563)	3902*** (1141)	2752 (2215)	0.014* (0.009)	-0.003 (0.003)	-0.003 (0.004)	-0.014*** (0.002)	-0.038*** (0.003)	-0.036*** (0.004)
Dep. var. mean	35,539	35,539	35,539	0.145	0.145	0.145	0.068	0.068	0.068
Observations	3,233,784	3,233,784	3,233,784	3,233,784	3,233,784	3,233,784	3,233,784	3,233,784	3,233,784
R-squared	0.000	0.000	0.000	0.061	0.061	0.061	0.068	0.068	0.068
F-test of pre-trends (p-value)	0.000	0.000	0.000	0.000	0.012	0.023	0.210	0.847	0.221

Robust standard errors (clustered by 2004 zip code) in parentheses. Significance levels: * 10 percent, ** 5 percent, *** 1 percent. Omitted category is year 2004. Estimates for different groups are from the same regression and are split up for readability. Age is as of 2004.

Table A7: Effects of hurricane Katrina by age

	Self-employment income			Retirement account withdrawals			No Social Security income		
	55+	31-54	30-	55+	31-54	30-	55+	31-54	30-
1999	1 (42)	-5 (46)	16 (36)	-151 (172)	40 (33)	105*** (33)	-0.007 (0.005)	-0.002*** (0.001)	-0.002** (0.001)
2000	-10 (40)	-8 (45)	-39 (38)	-261* (145)	-5 (29)	8 (17)	0.002 (0.004)	-0.001** (0.001)	-0.001** 0.000
2001	-14 (36)	-9 (31)	-63 (38)	-175 (112)	53 (34)	23 (19)	0.000 (0.003)	-0.002*** 0.000	0.000 0.000
2002	5 (26)	20 (27)	-34 (36)	-92 (103)	-40 (38)	14 (18)	-0.003 (0.003)	-0.001* 0.000	0.000 0.000
2003	23 (22)	-2 (19)	-29 (24)	90 (96)	9 (32)	-1 (17)	-0.005** (0.002)	-0.001** 0.000	0.000 0.000
2005	-143*** (25)	-63** (27)	-2 (36)	191 (131)	193*** (60)	-9 (29)	0.017*** (0.003)	0.000 0.000	0.000 0.000
2006	25 (48)	220*** (52)	298*** (63)	1560*** (241)	891*** (92)	115** (48)	0.019*** (0.006)	-0.001 (0.001)	0.000 (0.001)
2007	15 (46)	224*** (67)	254*** (88)	1157*** (259)	299*** (100)	-11 (57)	0.002 (0.009)	-0.004** (0.002)	-0.002* (0.001)
2008	114*** (42)	250*** (75)	211** (102)	960*** (298)	183** (86)	-9 (52)	0.018*** (0.007)	-0.001 (0.001)	-0.001 (0.001)
2009	128** (51)	241*** (68)	142 (99)	1258*** (329)	227** (91)	18 (60)	0.014* (0.008)	-0.001 (0.002)	-0.001 (0.001)
2010	139** (59)	238** (100)	166 (124)	1247*** (358)	228 (150)	-37 (83)	0.018** (0.008)	0.001 (0.002)	-0.001 (0.001)
Dep. var. mean	1,026	1,026	1,026	2,625	2,625	2,625	0.863	0.863	0.863
Observations	3,233,784	3,233,784	3,233,784	3,233,784	3,233,784	3,233,784	3,233,784	3,233,784	3,233,784
R-squared	0.000	0.000	0.000	0.000	0.000	0.000	0.197	0.197	0.197
F-test of pre-trends (p-value)	1.000	1.000	0.000	0.000	0.000	0.000	0.001	0.014	0.043

Robust standard errors (clustered by 2004 zip code) in parentheses. Significance levels: * 10 percent, ** 5 percent, *** 1 percent. Omitted category is year 2004. Estimates for different groups are from the same regression and are split up for readability. Age is as of 2004.

Table A8: Effects of hurricane Katrina by LAL/LAS status

	Moved cities			In 2004 city			Married		
	LAL	LAS	Other	LAL	LAS	Other	LAL	LAS	Other
1999	0.02*** (0.010)	-0.02*** (0.010)	-0.04*** (0.010)	0.07*** (0.020)	-0.03* (0.020)	-0.06*** (0.010)	0.76* (0.410)	-0.330 (0.450)	-0.560 (0.520)
2000	-0.01*** 0.000	-0.01*** 0.000	-0.03*** (0.010)	0.06*** (0.010)	-0.03** (0.010)	-0.06*** (0.010)	0.57* (0.320)	-0.280 (0.370)	-0.290 (0.400)
2001	-0.01*** 0.000	-0.01*** 0.000	-0.03*** (0.010)	0.05*** (0.010)	-0.03** (0.010)	-0.05*** (0.010)	0.47** (0.210)	-0.290 (0.290)	-0.140 (0.360)
2002	-0.00*** 0.000	-0.01*** 0.000	-0.03*** (0.010)	0.03*** (0.010)	-0.02** (0.010)	-0.05*** (0.010)	0.210 (0.170)	-0.230 (0.150)	0.140 (0.190)
2003	-0.00** 0.000	-0.00*** 0.000	-0.03*** (0.010)	0.02*** (0.010)	-0.02*** (0.010)	-0.04*** (0.010)	0.18* (0.090)	-0.15* (0.080)	0.020 (0.070)
2005	0.45*** (0.020)	0.18*** (0.030)	0.08** (0.040)	-0.44*** (0.020)	-0.20*** (0.030)	-0.12*** (0.030)	0.74*** (0.140)	0.40*** (0.100)	0.28** (0.110)
2006	0.16*** (0.020)	0.05*** (0.010)	0.000 (0.020)	-0.35*** (0.020)	-0.17*** (0.020)	-0.12*** (0.030)	0.90*** (0.140)	0.64*** (0.140)	0.290 (0.190)
2007	0.08*** (0.010)	0.010 (0.010)	-0.02** (0.010)	-0.28*** (0.010)	-0.15*** (0.020)	-0.11*** (0.030)	0.99*** (0.190)	0.87*** (0.220)	0.190 (0.330)
2008	0.04*** (0.010)	-0.010 (0.010)	-0.03*** (0.010)	-0.24*** (0.010)	-0.13*** (0.010)	-0.10*** (0.020)	0.86*** (0.210)	0.97*** (0.320)	0.450 (0.380)
2009	0.02*** (0.010)	-0.01* (0.010)	-0.04*** (0.010)	-0.21*** (0.010)	-0.11*** (0.010)	-0.10*** (0.020)	0.73*** (0.240)	0.94** (0.380)	0.300 (0.390)
2010	0.02*** (0.010)	-0.01*** 0.000	-0.04*** (0.010)	-0.18*** (0.010)	-0.10*** (0.010)	-0.09*** (0.020)	0.420 (0.260)	0.790 (0.490)	0.170 (0.450)
Dep. var. mean	0.070	0.070	0.070	0.840	0.840	0.840	29.860	29.860	29.860
Observations	3,233,723	3,233,723	3,233,723	3,231,959	3,231,959	3,231,959	3,233,723	3,233,723	3,233,723
R-squared	0.080	0.080	0.080	0.150	0.150	0.150	0.010	0.010	0.010
F-test of pre-trends (p-value)	0.000	0.000	0.000	0.000	0.000	0.000	0.090	0.370	0.000

Robust standard errors (clustered by 2004 zip code) in parentheses. Significance levels: * 10 percent, ** 5 percent, *** 1 percent. Omitted category is year 2004. The estimates for "married" are scaled by 100. Estimates for different groups are from the same regression and are split up for readability.

Table A9: Effects of hurricane Katrina by LAL/LAS status

	Newly married			Divorced			Number of kids		
	LAL	LAS	Other	LAL	LAS	Other	LAL	LAS	Other
1999	0.247** (0.097)	0.005 (0.066)	-0.074 (0.076)	0.072 (0.055)	0.152*** (0.057)	-0.097* (0.054)	0.005 (0.007)	-0.006 (0.007)	0.008 (0.010)
2000	0.108 (0.081)	-0.040 (0.103)	0.250*** (0.079)	0.119 (0.078)	0.056 (0.059)	-0.043 (0.094)	0.003 (0.007)	-0.004 (0.006)	0.007 (0.010)
2001	0.032 (0.080)	-0.130 (0.095)	0.118 (0.076)	-0.037 (0.096)	0.024 (0.065)	-0.059 (0.063)	0.002 (0.006)	-0.001 (0.006)	0.000 (0.007)
2002	-0.033 (0.065)	-0.100 (0.097)	0.242*** (0.074)	0.046 (0.086)	-0.011 (0.059)	-0.064 (0.173)	0.003 (0.005)	-0.001 (0.004)	-0.004 (0.003)
2003	0.136* (0.070)	-0.077 (0.101)	0.009 (0.081)	-0.003 (0.071)	-0.010 (0.055)	0.106 (0.114)	0.004 (0.003)	-0.002 (0.002)	-0.004 (0.003)
2005	0.950*** (0.160)	0.206 (0.133)	0.065 (0.170)	0.064 (0.077)	-0.035 (0.042)	-0.151** (0.069)	-0.026*** (0.005)	-0.002 (0.003)	-0.001 (0.002)
2006	0.385*** (0.096)	0.089 (0.099)	-0.062 (0.132)	0.111 (0.073)	0.040 (0.054)	-0.048 (0.080)	-0.035*** (0.007)	-0.001 (0.005)	0.003 (0.005)
2007	0.262** (0.129)	0.077 (0.106)	-0.090 (0.150)	-0.034 (0.073)	-0.012 (0.050)	-0.051 (0.069)	-0.045*** (0.011)	0.000 (0.009)	0.012* (0.007)
2008	0.093 (0.109)	-0.091 (0.083)	0.033 (0.134)	0.003 (0.057)	-0.060 (0.080)	-0.166** (0.065)	-0.046*** (0.012)	0.008 (0.011)	0.014 (0.009)
2009	0.035 (0.092)	-0.074 (0.070)	-0.235* (0.132)	-0.007 (0.061)	0.067 (0.052)	-0.111 (0.084)	-0.040*** (0.012)	0.015 (0.013)	0.013 (0.011)
2010	0.136 (0.121)	-0.093 (0.090)	-0.131 (0.095)	0.121 (0.095)	0.082 (0.097)	-0.025 (0.062)	-0.047*** (0.015)	0.016 (0.017)	0.020 (0.013)
Dep. var. mean	1.224	1.224	1.224	0.873	0.873	0.873	0.660	0.660	0.660
Observations	3,233,723	3,233,723	3,233,723	3,233,723	3,233,723	3,233,723	3,233,723	3,233,723	3,233,723
R-squared	0.002	0.002	0.002	0.001	0.001	0.001	0.006	0.006	0.006
F-test of pre-trends (p-value)	0.004	0.406	0.000	0.083	0.066	0.022	0.600	0.531	0.082

Robust standard errors (clustered by 2004 zip code) in parentheses. Significance levels: * 10 percent, ** 5 percent, *** 1 percent. Omitted category is year 2004. The estimates for "newly married" and "divorced" are scaled by 100. Estimates for different groups are from the same regression and are split up for readability.

Table A10: Effects of hurricane Katrina by income

	Moved cities		In 2004 city		Number of kids		Married		Newly married		Divorced	
	Below	Above	Below	Above	Below	Above	Below	Above	Below	Above	Below	Above
1999	-0.003 (0.008)	-0.013* (0.007)	0.008 (0.016)	-0.004 (0.019)	0.006 (0.006)	-0.001 (0.008)	-0.43** (0.170)	-0.060 (0.420)	-0.092 (0.058)	0.075 (0.088)	-0.005 (0.078)	0.103* (0.058)
2000	-0.008* (0.004)	-0.016*** (0.003)	0.006 (0.015)	-0.006 (0.016)	0.006 (0.005)	-0.002 (0.007)	-0.39*** (0.150)	-0.010 (0.340)	-0.061 (0.072)	0.124 (0.091)	-0.010 (0.086)	0.108 (0.070)
2001	-0.007 (0.004)	-0.015*** (0.003)	0.002 (0.014)	-0.008 (0.014)	0.002 (0.005)	-0.001 (0.005)	-0.29** (0.120)	-0.030 (0.260)	-0.089 (0.076)	-0.010 (0.093)	-0.099 (0.095)	0.036 (0.068)
2002	-0.006 (0.004)	-0.014*** (0.003)	0.000 (0.011)	-0.009 (0.011)	0.002 (0.004)	-0.002 (0.004)	-0.22** (0.100)	-0.040 (0.170)	-0.013 (0.088)	-0.030 (0.093)	-0.001 (0.086)	0.007 (0.076)
2003	-0.003 (0.003)	-0.009*** (0.003)	-0.003 (0.008)	-0.013* (0.007)	0.002 (0.004)	-0.002 (0.003)	-0.090 (0.100)	-0.030 (0.100)	0.062 (0.078)	-0.007 (0.091)	0.017 (0.091)	0.010 (0.060)
2005	0.360*** (0.042)	0.216*** (0.043)	-0.364*** (0.035)	-0.229*** (0.038)	-0.006* (0.003)	-0.014** (0.005)	0.47*** (0.090)	0.51*** (0.130)	0.438*** (0.102)	0.413** (0.196)	0.102 (0.087)	-0.049 (0.071)
2006	0.122*** (0.019)	0.065*** (0.020)	-0.284*** (0.025)	-0.193*** (0.029)	-0.025*** (0.006)	-0.009 (0.007)	0.61*** (0.160)	0.67*** (0.180)	0.143 (0.132)	0.134 (0.115)	0.046 (0.088)	0.069 (0.076)
2007	0.046*** (0.011)	0.024* (0.012)	-0.237*** (0.019)	-0.163*** (0.022)	-0.033*** (0.008)	-0.007 (0.011)	0.66*** (0.200)	0.83*** (0.250)	-0.016 (0.114)	0.116 (0.127)	0.056 (0.092)	-0.053 (0.056)
2008	0.019* (0.010)	0.001 (0.009)	-0.205*** (0.016)	-0.141*** (0.018)	-0.034*** (0.008)	-0.004 (0.013)	0.50** (0.220)	0.93*** (0.290)	-0.218** (0.104)	0.017 (0.095)	-0.011 (0.075)	-0.061 (0.069)
2009	0.009 (0.008)	-0.010 (0.008)	-0.183*** (0.014)	-0.125*** (0.017)	-0.034*** (0.008)	0.001 (0.015)	0.260 (0.280)	0.88** (0.340)	-0.084 (0.109)	-0.130 (0.091)	0.146 (0.090)	-0.039 (0.069)
2010	0.004 (0.008)	-0.013* (0.007)	-0.166*** (0.012)	-0.112*** (0.015)	-0.035*** (0.010)	-0.001 (0.018)	0.120 (0.320)	0.620 (0.410)	-0.031 (0.107)	-0.089 (0.102)	0.042 (0.094)	0.103 (0.086)
Dep. var. mean	0.072	0.072	0.845	0.845	0.660	0.660	29.860	29.860	1.224	1.224	0.873	0.873
Observations	3,233,784	3,233,784	3,232,000	3,232,000	3,233,784	3,233,784	3,233,784	3,233,784	3,233,784	3,233,784	3,233,784	3,233,784
R-squared	0.072	0.072	0.131	0.131	0.006	0.006	0.010	0.010	0.002	0.002	0.001	0.001
F-test of pre-trends (p-value)	0.105	0.000	0.022	0.000	0.790	0.769	0.060	1.000	0.057	0.420	0.653	0.439

Robust standard errors (clustered by 2004 zip code) in parentheses. Significance levels: * 10 percent, ** 5 percent, *** 1 percent. Omitted category is year 2004. The estimates for "married", "newly married", and "divorced" are scaled by 100. Estimates for different groups are from the same regression and are split up for readability. "Below" and "above" refer to household's 2004 wage relative to the median wage in New Orleans.

Table A11: Effects of hurricane Katrina by age

	Moved cities			In 2004 city			Number of kids		
	55+	31-54	30-	55+	31-54	30-	55+	31-54	30-
1999	-0.011*** (0.004)	-0.013** (0.006)	-0.016 (0.017)	-0.01 (0.01)	0.00 (0.02)	0.00 (0.04)	0.020*** (0.007)	-0.022 (0.014)	-0.004 (0.025)
2000	-0.012*** (0.002)	-0.015*** (0.003)	-0.022*** (0.007)	-0.01 (0.01)	-0.01 (0.01)	0.00 (0.04)	0.016*** (0.006)	-0.020* (0.011)	0.000 (0.018)
2001	-0.011*** (0.003)	-0.013*** (0.003)	-0.019** (0.008)	-0.01 (0.01)	-0.01 (0.01)	-0.01 (0.03)	0.015*** (0.005)	-0.017** (0.009)	0.003 (0.013)
2002	-0.010*** (0.003)	-0.011*** (0.003)	-0.016** (0.007)	-0.01 (0.01)	-0.01 (0.01)	-0.01 (0.03)	0.007 (0.004)	-0.012* (0.006)	0.008 (0.008)
2003	-0.008*** (0.003)	-0.007** (0.003)	-0.009 (0.006)	-0.01*** (0.00)	-0.01** (0.01)	-0.02 (0.02)	0.004 (0.003)	-0.008** (0.004)	0.008 (0.005)
2005	0.232*** (0.049)	0.266*** (0.042)	0.321*** (0.047)	-0.24*** (0.05)	-0.28*** (0.04)	-0.34*** (0.03)	-0.024*** (0.006)	-0.005 (0.005)	0.008* (0.004)
2006	0.057*** (0.017)	0.088*** (0.020)	0.113*** (0.029)	-0.20*** (0.04)	-0.23*** (0.03)	-0.27*** (0.02)	-0.030*** (0.007)	-0.003 (0.008)	0.005 (0.007)
2007	0.024** (0.010)	0.034*** (0.012)	0.040** (0.020)	-0.18*** (0.03)	-0.19*** (0.02)	-0.23*** (0.01)	-0.042*** (0.010)	0.005 (0.012)	0.008 (0.009)
2008	0.002 (0.007)	0.012 (0.009)	0.003 (0.019)	-0.16*** (0.03)	-0.17*** (0.02)	-0.18*** (0.01)	-0.034*** (0.010)	0.015 (0.015)	-0.009 (0.012)
2009	-0.007 (0.005)	-0.003 (0.007)	-0.001 (0.016)	-0.14*** (0.02)	-0.15*** (0.02)	-0.16*** (0.01)	-0.033*** (0.009)	0.026 (0.016)	-0.005 (0.014)
2010	-0.009** (0.004)	-0.007 (0.007)	-0.004 (0.016)	-0.13*** (0.02)	-0.14*** (0.01)	-0.14*** (0.01)	-0.036*** (0.011)	0.033* (0.019)	-0.012 (0.016)
Dep. var. mean	0.072	0.072	0.072	0.840	0.840	0.840	0.660	0.660	0.660
Observations	3,233,784	3,233,784	3,233,784	3,232,000	3,232,000	3,232,000	3,233,784	3,233,784	3,233,784
R-squared	0.072	0.072	0.072	0.130	0.130	0.130	0.041	0.041	0.041
F-test of pre-trends (p-value)	0.000	0.000	0.013	0.000	0.000	0.000	0.017	0.337	0.130

Robust standard errors (clustered by 2004 zip code) in parentheses. Significance levels: * 10 percent, ** 5 percent, *** 1 percent. Omitted category is year 2004. Estimates for different groups are from the same regression and are split up for readability. Age is as of 2004.

Table A12: Effects of hurricane Katrina by age

	Married			Newly married			Divorced		
	55+	31-54	30-	55+	31-54	30-	55+	31-54	30-
1999	-0.63*** (0.230)	-0.090 (0.440)	0.960 (1.020)	0.010 (0.079)	0.088 (0.092)	0.044 (0.266)	0.132* (0.074)	0.141* (0.082)	-0.131 (0.088)
2000	-0.40** (0.190)	-0.150 (0.320)	0.790 (0.880)	0.077 (0.079)	0.014 (0.117)	-0.084 (0.242)	-0.041 (0.095)	0.130 (0.089)	-0.090 (0.089)
2001	-0.38** (0.160)	-0.130 (0.240)	0.680 (0.750)	-0.016 (0.090)	-0.067 (0.089)	-0.127 (0.223)	0.090 (0.109)	-0.035 (0.076)	-0.196** (0.094)
2002	-0.23* (0.130)	-0.140 (0.150)	0.450 (0.570)	0.057 (0.080)	-0.090 (0.091)	-0.065 (0.231)	0.034 (0.091)	-0.026 (0.091)	-0.011 (0.100)
2003	-0.120 (0.100)	-0.050 (0.100)	0.180 (0.300)	-0.018 (0.087)	0.041 (0.085)	-0.074 (0.246)	-0.008 (0.104)	0.009 (0.078)	0.029 (0.121)
2005	0.45*** (0.110)	0.76*** (0.140)	-0.080 (0.210)	0.379*** (0.120)	0.638*** (0.195)	-0.027 (0.240)	0.052 (0.085)	-0.012 (0.083)	-0.130 (0.100)
2006	0.58*** (0.180)	1.05*** (0.190)	-0.030 (0.510)	0.130* (0.077)	0.258** (0.126)	0.008 (0.267)	0.096 (0.090)	0.092 (0.078)	-0.148 (0.106)
2007	0.70*** (0.240)	1.35*** (0.260)	-0.240 (0.700)	0.072 (0.090)	0.241* (0.128)	-0.161 (0.210)	0.038 (0.098)	-0.008 (0.084)	-0.137 (0.118)
2008	0.85*** (0.290)	1.53*** (0.290)	-0.690 (0.950)	0.118 (0.085)	0.084 (0.108)	-0.439* (0.228)	0.024 (0.092)	-0.028 (0.088)	-0.222** (0.107)
2009	0.93*** (0.340)	1.57*** (0.310)	-1.240 (1.170)	-0.008 (0.080)	-0.018 (0.091)	-0.267 (0.226)	-0.046 (0.095)	0.054 (0.080)	0.018 (0.105)
2010	0.71** (0.340)	1.44*** (0.360)	-1.410 (1.330)	-0.077 (0.095)	0.020 (0.109)	-0.024 (0.230)	0.125 (0.101)	0.158* (0.095)	-0.203* (0.118)
Dep. var. mean	29.860	29.860	29.860	1.224	1.224	1.224	0.873	0.873	0.873
Observations	3,233,784	3,233,784	3,233,784	3,233,784	3,233,784	3,233,784	3,233,784	3,233,784	3,233,784
R-squared	0.020	0.020	0.020	0.002	0.002	0.002	0.001	0.001	0.001
F-test of pre-trends (p-value)	0.080	0.880	0.950	0.779	0.351	0.950	0.078	0.107	0.117

Robust standard errors (clustered by 2004 zip code) in parentheses. Significance levels: * 10 percent, ** 5 percent, *** 1 percent. Omitted category is year 2004. Estimates are scaled by 100. Estimates for different groups are from the same regression and are split up for readability. Age is as of 2004.